

job name:
 type:

9" top.is.tiki.up™ spec sheet 90CRI

material

downlight housing

precision CNC spun .063" aluminum. downlight housing with rolled bottom edge for added strength.

uplight array platform

.063" spun aluminum, recesses into top of fixture.

downlight array platform

.080" spun aluminum.

bottom lens (optional)

.125" P95 frosted acrylic flat lens with 3 finger holes. recesses slightly into fixture.

optics

uplight

340° omnidirectional silicone optic

downlight

.050" spun aluminum conical reflector finished in high reflectance (>92%) matte white powder coat.

LED module

COB array in 2700K, 3000K, 3500K, or 4000K. (call factory for 5000K) (90+ cri standard). under normal operating conditions, the LEDs employed are rated for >50,000hrs L70 (6.8K) per IES TM-21 from LM-80 test data.

drivers

integral, class 2, universal input (120-277v), constant current, 0-10v dimming, 1% minimum dimming level, PF >.9, THD <20%, protections include open and short circuit, overload and over temperature.

mounting

5"dia. spun steel canopy in satin white with 6ft ultrathin stainless steel wisp cable tripod and tiny field adjustable grippers that allow for exact AFF mounting heights. or select 12ft adjustable suspension. (drawing below)

finish

select from standard powder coat paint finishes or specify RAL# for custom colors.

emergency

recommend use of inverter (by other).

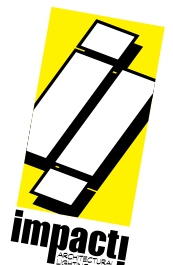
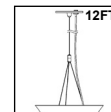
optional WREM: wired for remote EM battery (by other). 2nd power cord required.



catalog number

P5909						
size	direct LED	indirect LED	power cord	options		
P5909 9"dia X 8.5"ht see pages 2 & 3 for info on P5913 and P5917	CCT lumens	CCT lumens	WHPC white power cord and canopy	6FT 72" cables		
	27 2700K LO 995 lm	27 2700K UP 970 lm	BKPC black power cord and canopy	12FT 12ft adj suspension		
	30 3000K HI 1985 lm	30 3000K	SBPC silver braid power cord and white canopy	BL Bottom lens		
	35 3500K HX 2780 lm	35 3500K		DCDM dual circuit wiring on dimming direct/indirect (requires 2nd power cord)		
	40 4000K	40 4000K		WREM wired for remote EM battery pack (by other) (see note above)		
				ELD EldoLED*		
				LUT Lutron*		
				*consult factory		

premium finish
RAL specify RAL#



job name:
 type:

13" top.Is.tiki.up™ spec sheet 90CRI

material

downlight housing
 precision CNC spun .063" aluminum. downlight housing with rolled bottom edge for added strength.

uplight array platform
 .063" spun aluminum, recesses into top of fixture.

downlight array platform
 .080" spun aluminum.

bottom lens (optional)
 .125" P95 frosted acrylic flat lens with 3 finger holes. recesses slightly into fixture.

optics

uplight (optional)
 340° omnidirectional silicone optic

downlight
 .050" spun aluminum conical reflector finished in high reflectance (>92%) matte white powder coat.

LED module

COB array in 2700K, 3000K, 3500K, or 4000K. (call factory for 5000K) (90+ cri standard). under normal operating conditions, the LEDs employed are rated for >50,000hrs L70 (6.8K) per IES TM-21 from LM-80 test data. for dual circuit wiring on direct/indirect dimming luminaires, specify under options.

driver

integral, programmable, UL class P, class 2, universal input (120-277v), constant current, 0-10v dimming, 1% minimum dimming level, PF >.9, THD <20%, protections include open and short circuit, overload and over temperature.

mounting

5"dia. spun steel canopy in satin white with 6ft ultrathin stainless steel wisp cable tripod and tiny field adjustable grippers that allow for exact AFF mounting heights. or select 12ft adjustable suspension. (drawing below)

finish

select from standard powder coat paint finishes listed below or specify RAL# for custom colors.

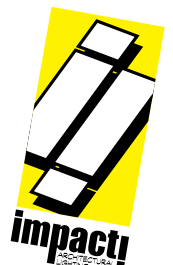
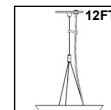
emergency

recommend use of inverter (by other).
 optional WREM: wired for remote EM battery (by other). 2nd power cord required.



catalog number

P5913						
size	direct LED	indirect LED	painted finish	power cord	options	
P5913 13"dia X 12.5"ht see page 3 for info on P5917	CCT lumens 27 2700K FX 1585 lm 30 3000K LO 2975 lm 35 3500K HI 3375 lm 40 4000K HX 4120 lm CL* xxxx lm custom lumens consult factory	CCT lumens 27 2700K FX 775 lm 30 3000K LO 1745 lm 35 3500K HI 1940 lm 40 4000K CL* xxxx lm custom lumens consult factory	AP anodized paint BS brass BU blue BZ bronze CP champagne FB flat black GM gun metal MB military blue MW matte white OR orange RD red SB satin black SS satin silver TG textured gray YO yellow premium finish RAL specify RAL#	WHPC white power cord and canopy BKPC black power cord and canopy SBPC silver braid power cord and white canopy	6FT 72" cables 12FT 12ft adj suspension BL Bottom lens DCDM dual circuit wiring on dimming direct/indirect (requires 2nd power cord) WREM wired for remote EM battery pack (by other) (see note above) ELD EldoLED* LUT Lutron* *consult factory	



job name:
 type:

17" top.is.tiki.up™ spec sheet 90CRI

material

downlight housing
 precision CNC spun .063" aluminum. downlight housing with rolled bottom edge for added strength.

uplight array platform
 .063" spun aluminum, recesses into top of fixture.

downlight array platform
 .080" spun aluminum.

bottom lens (optional)
 .125" P95 frosted acrylic flat lens with 3 finger holes. recesses slightly into fixture.

optics

uplight (optional)
 340° omnidirectional silicone optic

downlight
 .050" spun aluminum conical reflector finished in high reflectance (>92%) matte white powder coat.

LED module

COB array in 2700K, 3000K, 3500K, or 4000K. (call factory for 5000K) (90+ cri standard). under normal operating conditions, the LEDs employed are rated for >50,000hrs L70 (6.8K) per IES TM-21 from LM-80 test data. for dual circuit wiring on direct/indirect dimming luminaires, specify under options.

driver

integral, programmable, UL class P, class 2, universal input (120-277v), constant current, 0-10v dimming, 1% minimum dimming level, PF >.9, THD <20%, protections include open and short circuit, overload and over temperature.

mounting

5"dia. spun steel canopy in satin white with 6ft ultrathin stainless steel wisp cable tripod and tiny field adjustable grippers that allow for exact AFF mounting heights. or select 12ft adjustable suspension. (drawing below)

finish

select from standard powder coat paint finishes listed below or specify RAL# for custom colors.

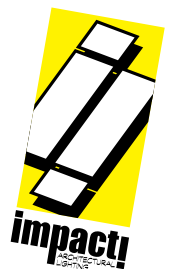
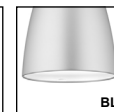
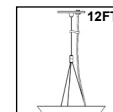
emergency

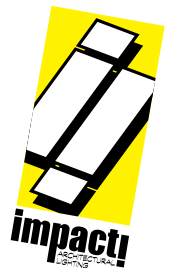
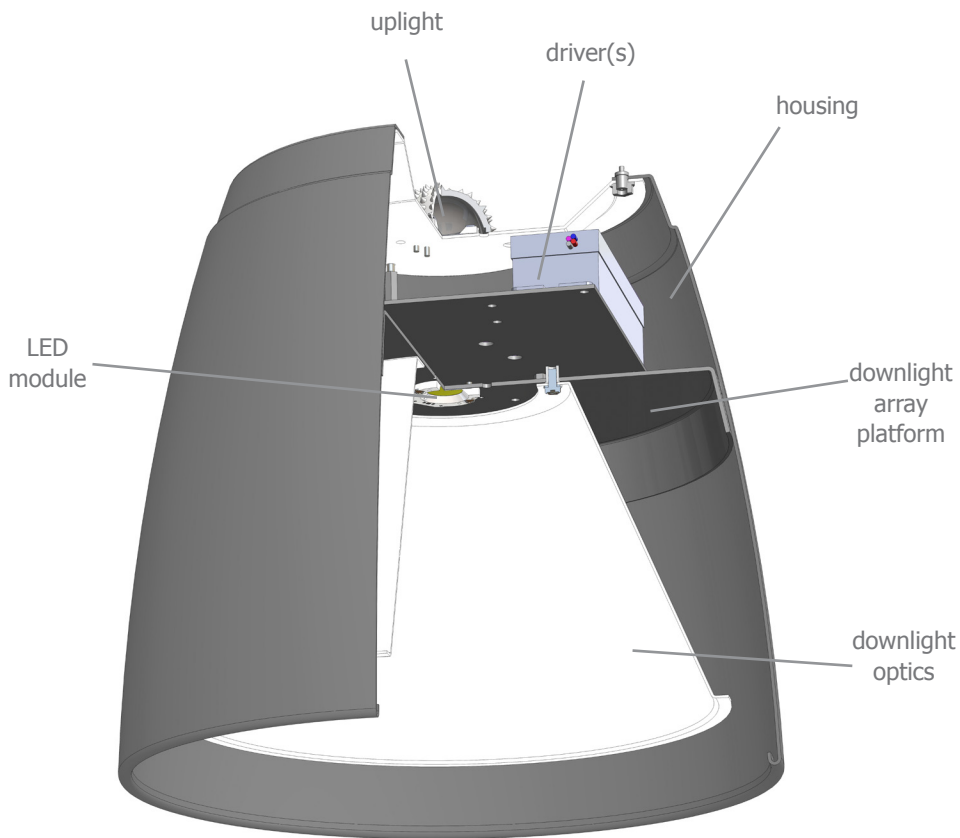
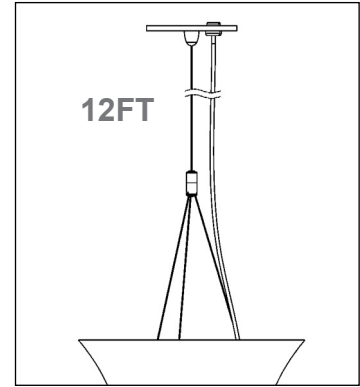
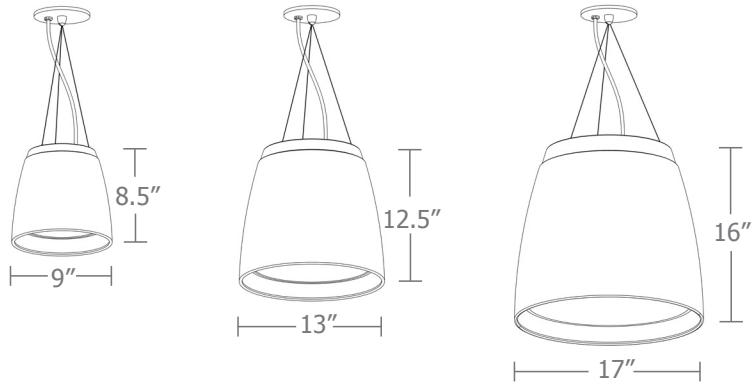
recommend use of inverter (by other).
 optional WREM: wired for remote EM battery (by other). if using WHPC, SBPC, or BKPC cords, 2nd power cord required.



catalog number

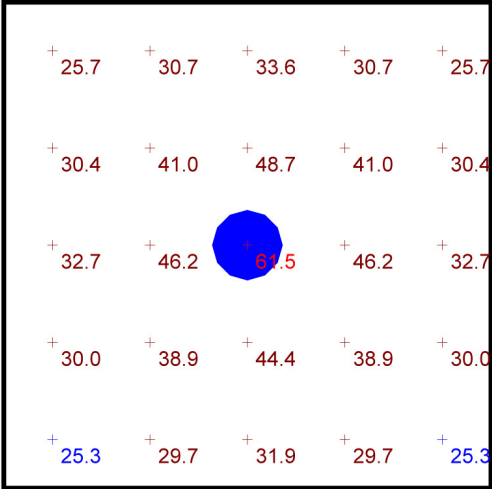
P5917						
size P5917 17"dia X 16"ht	direct LED CCT lumens	indirect LED CCT lumens	painted finish	power cord	options	
	27 2700K FX 2580 lm	27 2700K FX 775 lm	AP anodized paint	WHPC white power cord and canopy	6FT 72" cables	
	30 3000K LO 3375 lm	30 3000K LO 1550 lm	BS brass	BKPC black power cord and canopy	12FT 12ft adj suspension	
	35 3500K HI 4550 lm	35 3500K HI 2135 lm	BU blue	SBPC silver braid power cord and white canopy	BL Bottom lens	
	40 4000K HX 4985 lm	40 4000K CL* xxxx lm <small>custom lumens consult factory</small>	BZ bronze		DCDM dual circuit wiring on dimming direct/indirect (requires 2nd power cord)	
	CL* xxxx lm <small>custom lumens consult factory</small>		CP champagne		WREM wired for remote EM battery pack (by other) (see note above)	
			FB flat black		ELD EldoLED*	
			GM gun metal		LUT Lutron*	<small>*consult factory</small>
			MB military blue			
			MW matte white			
			OR orange			
			RD red			
			SB satin black			
			SS satin silver			
			TG textured gray			
			YO yellow			
			premium finish RAL specify RAL#			





Quick Calc Typical Lighting Layout

- 10' x 10' x 10'H space
- 80/50/20 reflectances
- bottom of fixture at 12' aff
- FC readings at 2.5' aff
- layout conducted using 17" dia. unit with HX lumen downlight and HI lumen uplight for total 7120 delivered lumens



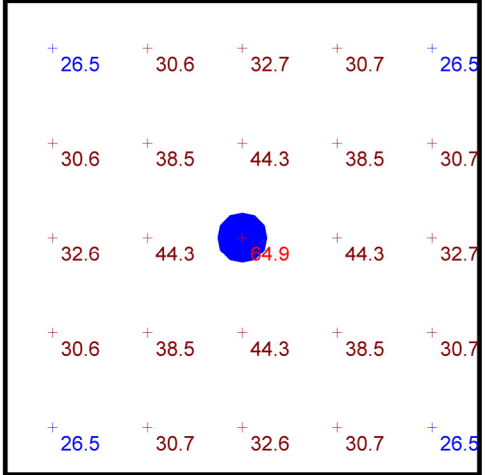
Plan View
Scale - 1" = 2ft

Statistics						
Description	Symbol	Avg	Max	Min	Max/Min	Avg/Min
top.ls.tiki.up	+	35.3 fc	61.5 fc	25.3 fc	2.4:1	1.4:1

Schedule						
Symbol	QTY	Manufacturer	Catalog Number	Description	Lamp	Wattage
○	1	Impact Architectural Lighting	P5917 40 HX 40 HI	17" dia. pendant top.ls.tiki.up luminaire w/ open bottom	4000k 90cri LED	73

Advanced Calculation Typical Lighting Layout

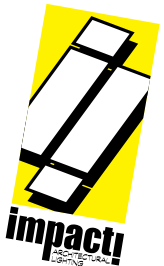
- 12' x 12' x 16'H space
- 80/50/20 reflectances
- bottom of fixture at 12' aff
- FC readings at 2.5' aff
- layout conducted using 17" dia. unit with individual files for HX lumen downlight and HI lumen uplight for total 7120 delivered lumens



Plan View
Scale - 1" = 2ft

Statistics						
Description	Symbol	Avg	Max	Min	Max/Min	Avg/Min
top.ls.tiki.up	+	35.1 fc	64.9 fc	26.5 fc	2.4:1	1.3:1

Schedule						
Symbol	QTY	Manufacturer	Catalog Number	Description	Lamp	Wattage
○	1	Impact Architectural Lighting	P5917 40 HX 40 xx	17" dia. pendant top.ls.tiki.up DOWNLIGHT portion ONLY	4000k 90cri LED	45
○	1	Impact Architectural Lighting	P5917 40 xx 40 HI	17" dia. pendant top.ls.tiki.up UPLIGHT portion ONLY	4000k 90cri LED	28



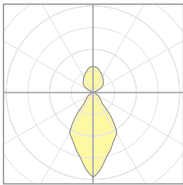
Quick Calc Table

Tests indicated below are a combination of direct and indirect. LLF are as close as possible.

for more detailed calculations see table on next page.

Cat No	Direct Delivered* Lumens	Indirect Delivered* Lumens	Watts 120V / 277V	IES File #	LLF to be applied
P5909 LO UP	995	970	20	10211U09A open	.58
				20154 lensed	.55
P5909 HI UP	1985	970	30	10211U09A open	.87
				20154 lensed	.82
P5909 HX UP	2780	970	39	10211U09A open	1.10
				20154 lensed	1.03
P5913 FX FX	1585	775	24	10212U13A open	.36
				20620.1 lensed	.39
P5913 LO LO	2975	1745	49	10212U13A open	.73
				20620.1 lensed	.73
P5913 HI HI	3375	1940	55	10212U13A open	.82
				20620.1 lensed	.87
P5913 HX HI	4120	1940	62	10212U13A open	.93
				20620.1 lensed	.99
P5917 FX FX	2580	775	35	10213U17A open	.45
				20620.1 lensed	.55
P5917 LO LO	3375	1550	51	10213U17A open	.66
				20620.1 lensed	.81
P5917 HI HI	4550	2135	68	10213U17A open	.90
				20620.1 lensed	1.09
P5917 HX HI	4985	2135	73	10213U17A open	.96
				20620.1 lensed	1.17

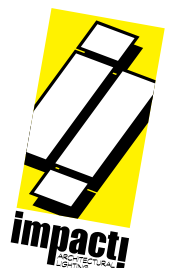
*delivered lumens based on 4000K, 90+ cri



20689
P5117-40CL (4000lm) 40HI

The application of a Light Loss Factor is required to:

- match the lumen output for the power module specified
- incorporate the increased lumen output due to LED/Driver upgrades



Advanced Calculation Table

Tests are for each element separately and must be "stacked" to represent single fixture
Consult factory for applications assistance

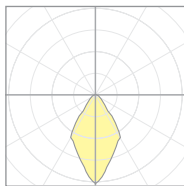
Direct

Cat No	Delivered* Lumens	Watts 120V/277V	IES File #	LLF to be applied
P5909	LO 995	10	10211U09C open	.44
			20617.1 lensed	.24
P5909	HI 1985	21	10211U09C open	.89
			20617.1 lensed	.48
P5909	HX 2780	29	10211U09C open	1.24
			20617.1 lensed	.67
P5913	FX 1585	16	20616.1 open	.41
			20617.1 lensed	.38
P5913	LO 2975	31	20616.1 open	.78
			20617.1 lensed	.72
P5913	HI 3375	35	20616.1 open	.88
			20617.1 lensed	.82
P5913	HX 4126	42	20616.1 open	1.07
			20617.1 lensed	1.00
P5917	FX 2580	27	20688 open	.62
			20617.1 lensed	.62
P5917	LO 3375	35	20688 open	.81
			20617.1 lensed	.82
P5917	HI 4550	47	20688 open	1.09
			20617.1 lensed	1.10
P5917	HX 4985	51	20688 open	1.19
			20617.1 lensed	1.21

*delivered lumens based on 4000K, 90+ cri

Indirect

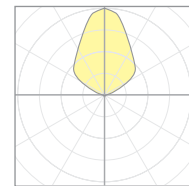
Delivered* Lumens	Watts 120V/277V	IES File #	LLF to be applied
UP 970	10	10211U09B	.84
FX 775	8	10212U13B	.32
LO 1745	18	10212U13B	.72
HI 1940	20	10212U13B	.80
FX 775	8	10213U17B	.29
LO 1550	16	10213U17B	.58
HI 2135	22	10213U17B	.80



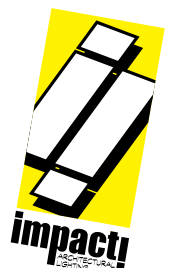
20688
P5117-40CL (4000lm) NUL

The application of a Light Loss Factor is required to:

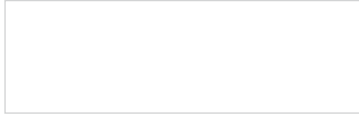
- match the lumen output for the power module specified
- incorporate the increased lumen output due to LED/Driver upgrades



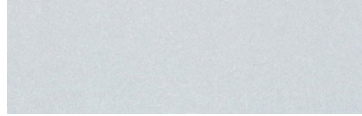
20618.1
P5113-NDL-40HI



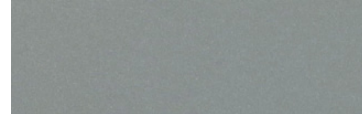
Powder Coat Paint Finishes



MW matte white



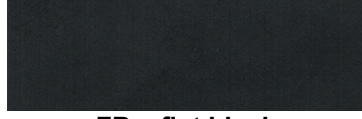
AP anodized paint



SS satin silver



TG textured gray



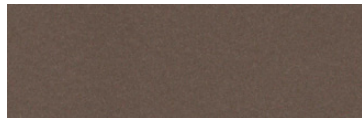
FB flat black



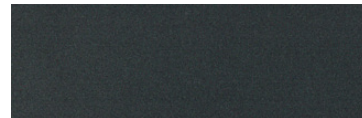
SB satin black



CP champagne



BZ bronze



GM gun metal



OR orange 2011



BU blue 5017



BS brass



RD red 3020



YO yellow 1018



MB military blue

For accurate color verification, actual finish samples are available upon request.

Premium Finishes*



RAL#

*Available on select series. Consult product submittal for availability.

